

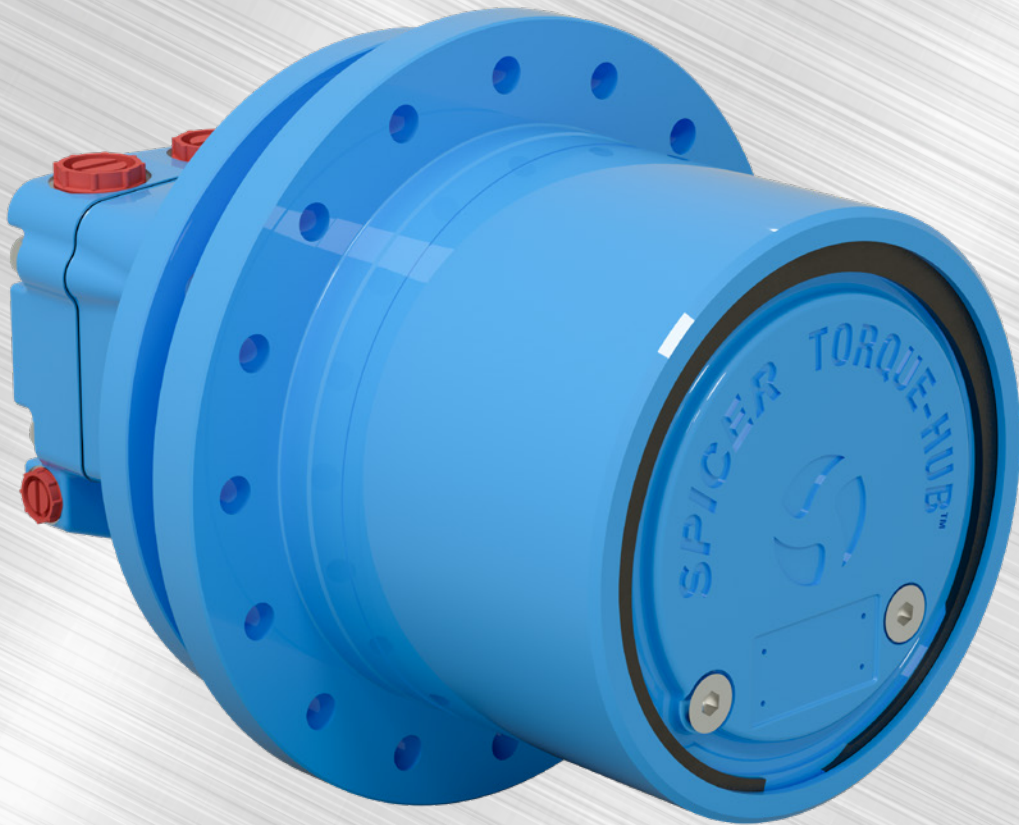


SPICER®

Torque-Hub™

Spicer® Torque-Hub™

RCT7102 Track Drive



Spicer® Torque-Hub™ **RCT7102** Product
designed for today's **high-performance**
hydraulically driven **Track, Drum and**
Wheel applications.

RCT7102

Spicer® Torque-Hub™ RCT7102 Track Drive

Track drive characterized by high versatility, it is designed for undercarriage and road equipment applications. Double stage planetary offers a best-in-class efficiency package even in combination with Brevini® B5VR hydraulic motor.

COMPACT PRODUCT DESIGN 10 kNm TORQUE RATING INSIDE 220 mm PILOT

ROBUST DESIGN SUITABLE FOR LOW TEMPERATURE

AVAILABLE AS HYDRAULIC MOTOR AND GEARBOX PACKAGE

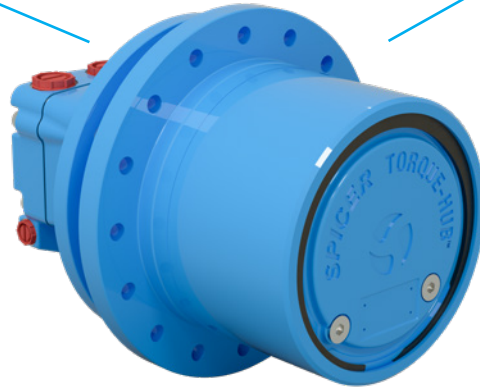
Additional Features and Benefits

- Fail safe parking brake (SAHR)
- Optional disengagement device for towing
- High radial load capacity bearings
- B5VR Cartridge hydraulic motors for compact layouts
- Mechanical face seal system designed for severe environmental conditions
- Oil plugs available on cover and spindle side for different mounting solution

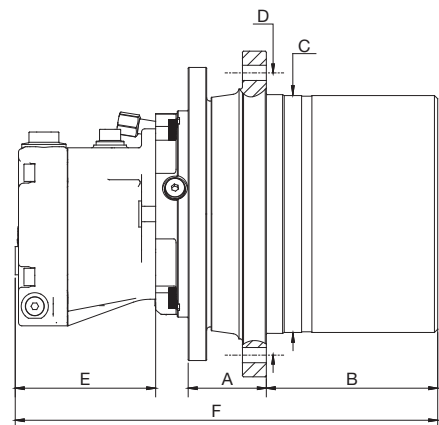
		7102
A - Flange to Flange	mm	72
	[in]	[2.83]
B - Hub Length	mm	158
	[in]	[6.62]
C - Sprocket Pilot Diameter	mm	220
	[in]	[8.66]
D - Sprocket Bolt Circle Diameter	mm	260
	[in]	[10.24]
E - Motor Length	mm	129
	[in]	[5.08]
F - Total Unit Length	mm	389
	[in]	[15.31]

RCT7102	Output Torque	kNm [ft-lbs]	10 [2.83]
	Reduction Ratio range		48:1 - 44:1 35:1 - 29:1
	Max. input speed	rpm	5000
B5VR45	Displacement	cm³/rev [in³/rev]	45 [2.75]
	Peak Pressure	bar [psi]	350 [5075]
	Working Pressure	bar [psi]	300 [4350]
	Max. Oil flow	l/min [US gal/min]	158 [41.7]

INCREASED PRODUCTIVITY -
HIGH EFFICIENCY GEARS,
LONG GEAR LIFETIME



Hydraulic motor: Brevini® B5VR45



Dana.com/oh/contact

Application Policy

Capacity ratings, features, and specifications vary depending upon the model and type of service. Application approvals must be obtained from Dana; contact your representative for application approval. We reserve the right to change or modify our product specifications, configurations, or dimensions at any time without notice.



SPICER®

Torque-Hub™