

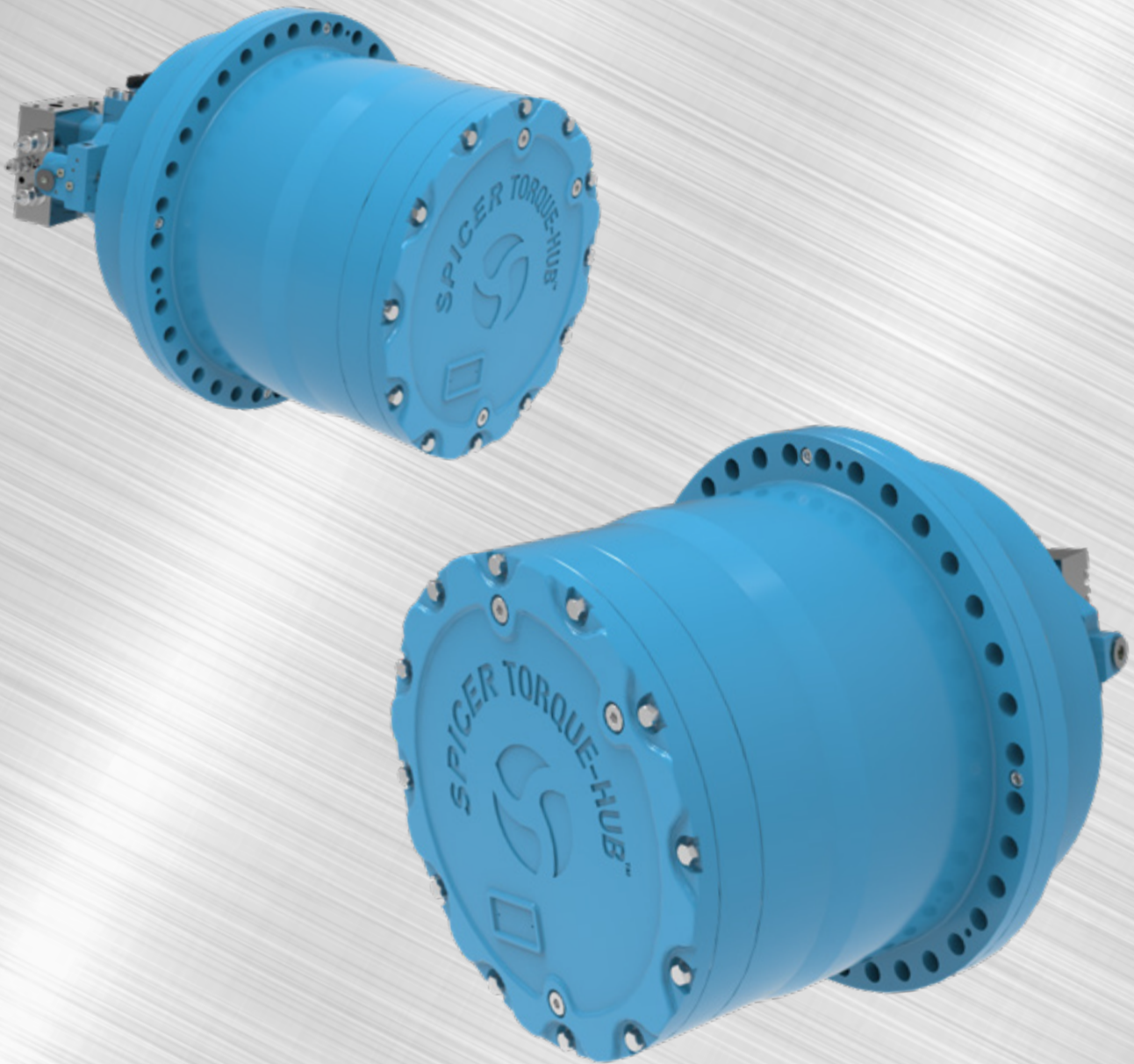


**SPICER®**

*Torque-Hub™*

# Spicer® Torque-Hub™<sup>TM</sup>

## RCT Series Track Drive



Spicer® Torque-Hub™ Track Drive are  
Engineered for a **variety of off-highway**  
**applications** based on a **proven**  
**modular design approach.**

# RCT Series

Spicer® Torque-Hub™

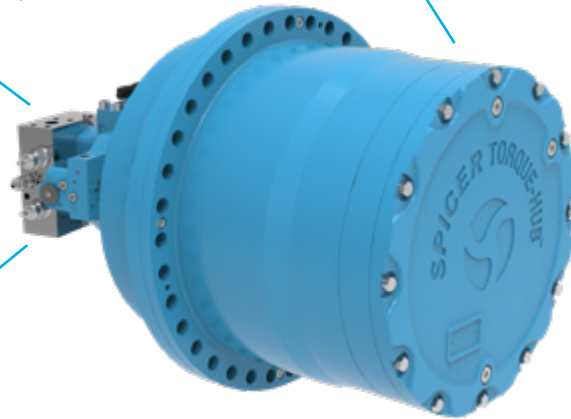
## RCT Series Track Drive

The new RCT series is engineered to deliver performance, durability and reliability to Off-Highway tracked applications. The track drives offer a flexible packaging and gear ratios to meet manufacturer preferences. Our Spicer® Torque-Hub™ drives can be packaged with Brevini® hydraulic motors and pumps to offer an optimized solution that delivers superior power density, efficiency at start-up, and smooth starts and stops.

**DELIVER HIGH TORQUE DENSITY  
FOR HIGH-PERFORMANCE  
MACHINES**

**BEST IN CLASS EFFICIENCY  
PACKAGE WITH HYDRAULIC  
OR ELECTRIC MOTOR**

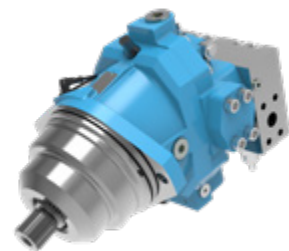
**ROBUST DESIGN SUITABLE  
FOR LOW TEMPERATURE**



### Additional Features and Benefits

- 1 Product range specifically designed for Off-Highway tracked application
- 3 new Products suitable for all large tracked vehicles
- Torque ratings from 80.000 Nm to 130.000 Nm
- Wide range of ratios and Internal multidisc parking brake
- High radial and axial load capacity bearings
- Special sealing system designed for severe environmental conditions
- Suitable for hydraulic and electric vehicles, with Dana's hydraulic and electric motors

Recommended motor: Brevini® SH7VR/MCV

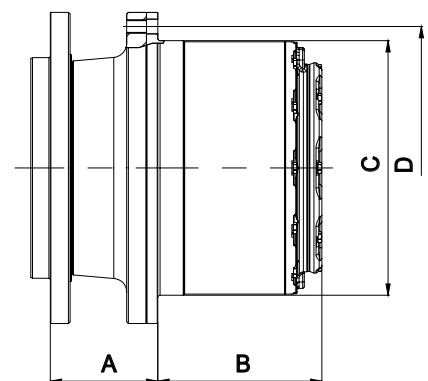


	9083	9103	9133
Integrated Parking Brake	▲	▲	▲
Hydraulic Motor Cartridge Version	Brevini Cartridge Motor + Motion Control Valve		
Disengage	▲	▲	▲

\*Note: Crawler Version ▲ - Solution available

		9083	9103	9133
A - Flange to Flange	mm [In]	90 [3,54]	165 [6,50]	190 [7,48]
B - Hub Length	mm [In]	290 [11,42]	263 [10,35]	290 [11,42]
C - Wheel Pilot Diameter	mm [In]	400 [15,75]	408 [16,06]	450 [17,72]
D - Wheel Bolt Circle Diameter	mm [In]	450 [17,72]	460 [18,11]	500 [19,69]

		9083	9103	9133
Output Torque Rating	kNm [lb-ft]	80 [59,000]	100 [73,756]	130 [95,000]
Ratio Range		55-205	67-210	67-210
Motor Mount		Cartridge	Cartridge	Cartridge



### Dana.com/oh/contact

#### Application Policy

Capacity ratings, features, and specifications vary depending upon the model and type of service. Application approvals must be obtained from Dana; contact your representative for application approval. We reserve the right to change or modify our product specifications, configurations, or dimensions at any time without notice.



**SPICER®**

Torque-Hub™